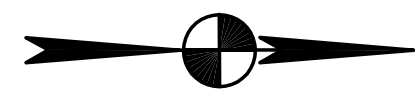
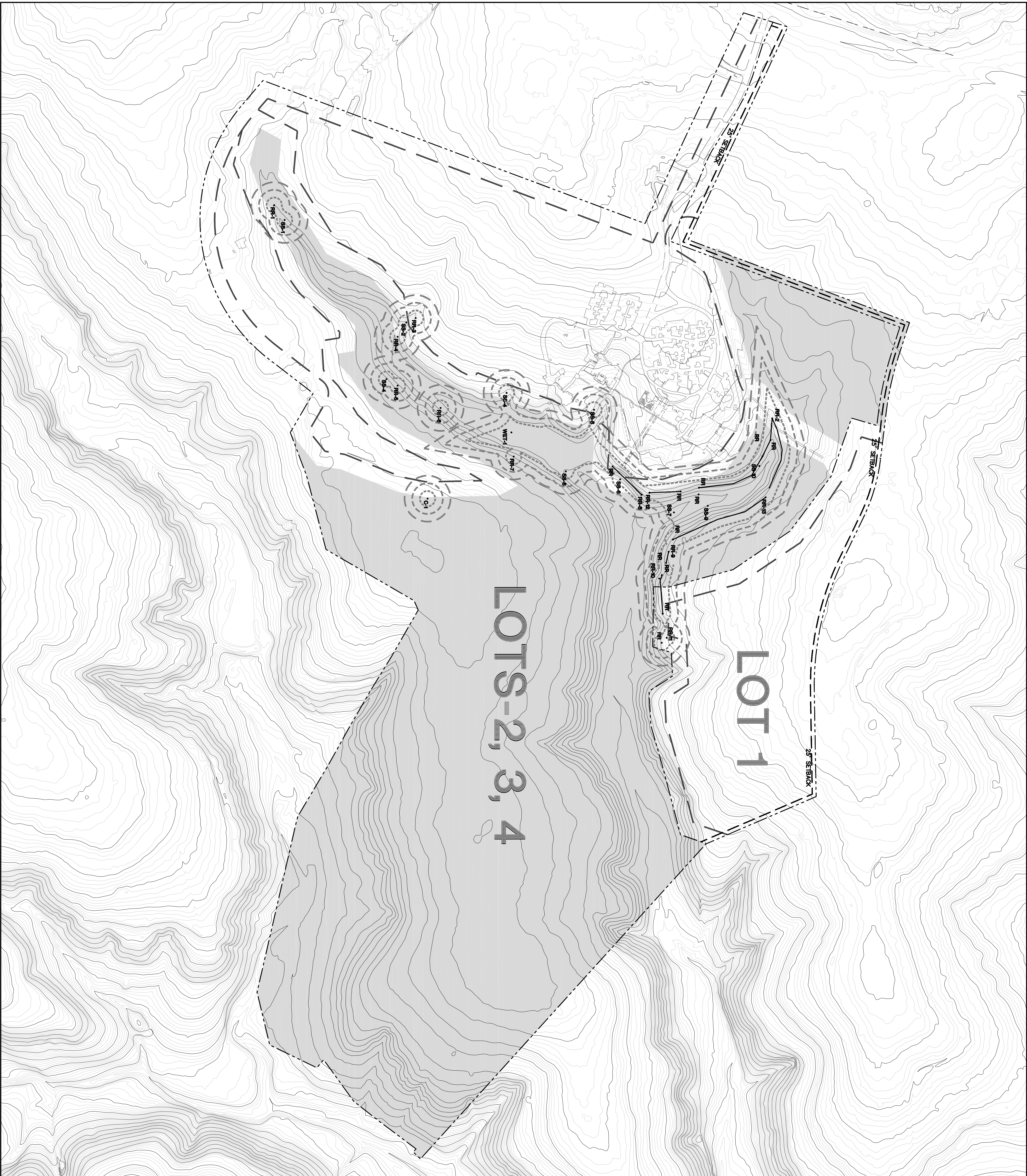


G:\878\07\Exh1\87807EXH12.dwg modified by kchapa on Oct 24, 2006 - 11:58am



LEGEND	
Wavy line	WETLANDS
Circle with dot	SEEP OR SPRING
Dashed line	RIMROCK
Solid line	PROPERTY LINE
Long-dashed line	CRITICAL ENVIRONMENTAL FEATURE
Short-dashed line	100' SETBACK
Short-dashed line	150' SETBACK
Light grey shaded area	MITIGATED LAND AREA
Thick dashed line	100' DEFENSIBLE SPACE SETBACK

<b>EXH</b> SHEET	PLOTTING SCALE: 1" = 1'
	DATE PLOTTED: 10/23/06
	FILE: \G:\878\07\EXH\87807EXH12
	DRAWN BY: AGC
	DESIGNED BY: CEF
	REVIEWED BY: CEF
PROJECT NO.: 878-07.00	

**CONCORDIA LUTHERAN COLLEGE CAMPUS**  
**RR 620 & ROCK HARBOR DRIVE**

**H, S & A**

## SITE CONSTRAINT MAP

**Bury+Partners**  
 ENGINEERING SOLUTIONS  
 3345 Bee Caves Road, Suite 200  
 Austin, Texas 78746  
 Tel. (512)328-0011 Fax (512)328-0325  
 Bury+Partners, Inc. ©Copyright 2006